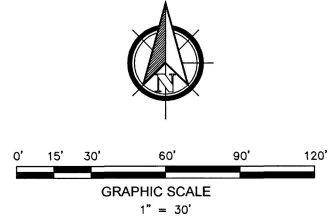
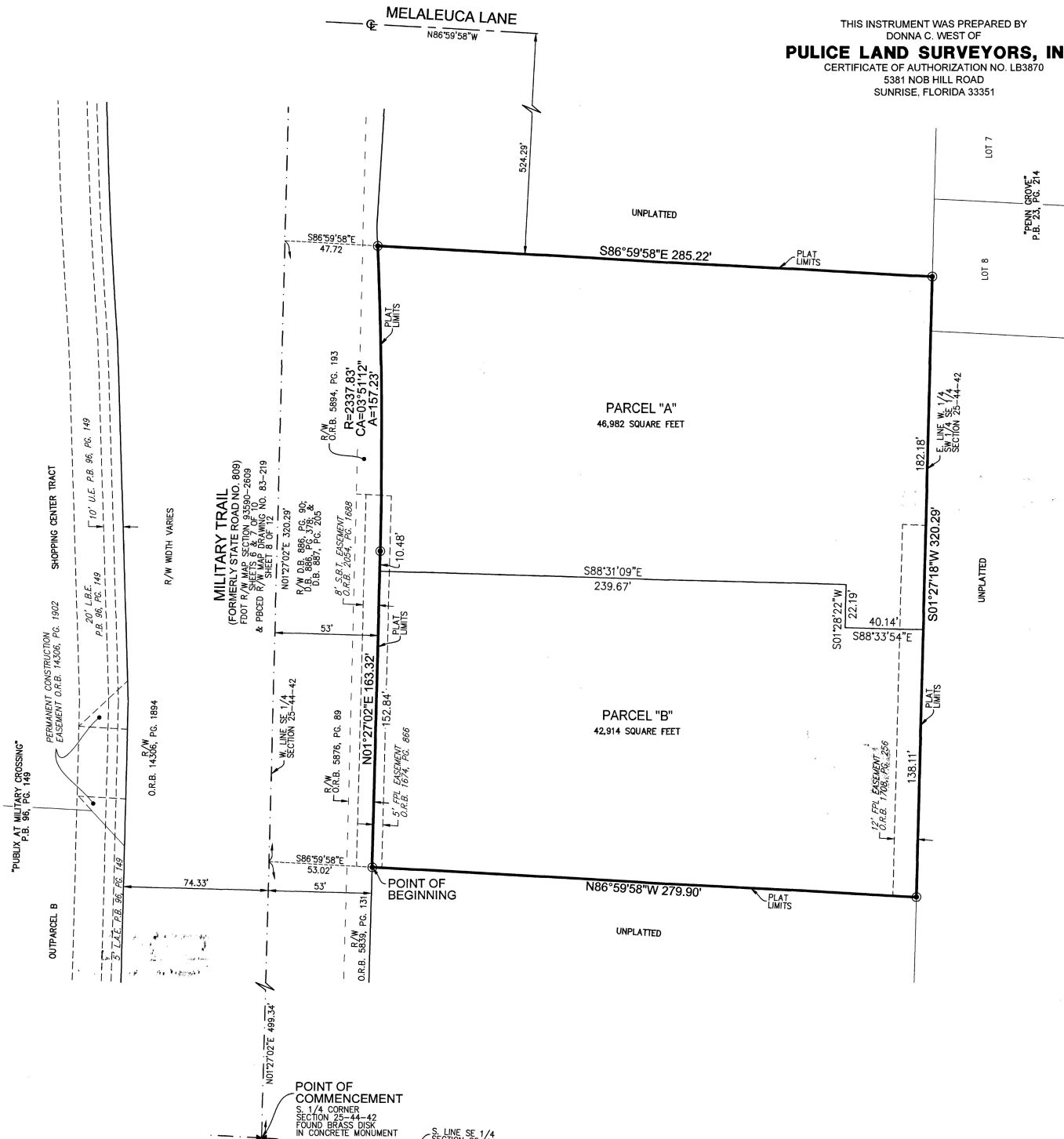


ATLANTIS RETAIL

A PORTION OF THE SE 1/4 OF SECTION 25, TOWNSHIP 44 SOUTH, RANGE 42 EAST,
CITY OF ATLANTIS, PALM BEACH COUNTY, FLORIDA

THIS INSTRUMENT WAS PREPARED BY
DONNA C. WEST OF
PULICE LAND SURVEYORS, INC.
CERTIFICATE OF AUTHORIZATION NO. LB3870
5381 NOB HILL ROAD
SUNRISE, FLORIDA 33351



- LEGEND & ABBREVIATIONS:**
- ⊙ = SET PERMANENT REFERENCE MONUMENT, 4"X4"X24" CONCRETE MONUMENT WITH 2" ALUMINUM DISK "PRM LB3870" (UNLESS OTHERWISE NOTED)
 - ⊕ = CENTERLINE
 - D.B. = DEED BOOK
 - FDOT = FLORIDA DEPARTMENT OF TRANSPORTATION
 - FPL = FLORIDA POWER AND LIGHT
 - LB = LICENSED BUSINESS
 - L.A.E. = LIMITED ACCESS EASEMENT
 - L.B.E. = LANDSCAPE BUFFER EASEMENT
 - LS = LICENSED SURVEYOR
 - O.R.B. = OFFICIAL RECORDS BOOK
 - P.B. = PLAT BOOK
 - PG. = PAGE
 - P.L.S. = PROFESSIONAL LAND SURVEYOR
 - R/W = RIGHT-OF-WAY
 - S.B.T. = SOUTHERN BELL & TELEPHONE
 - U.E. = UTILITY EASEMENT